

Report Interpretation Guide
**OASIS-C Monthly
Trended Outcomes
Analysis**



Table of Contents

Introduction	3
Quick View of Report Specifications	3
Sample Report.....	4
Page 1.....	4
Page 2.....	5
Page 3.....	6
Report Structure	7
Header Definitions	7
Compare Group Definitions	7
Graphical Data	7
Tabular Data	7
Measure Definitions	7
Other Resources	9

Introduction

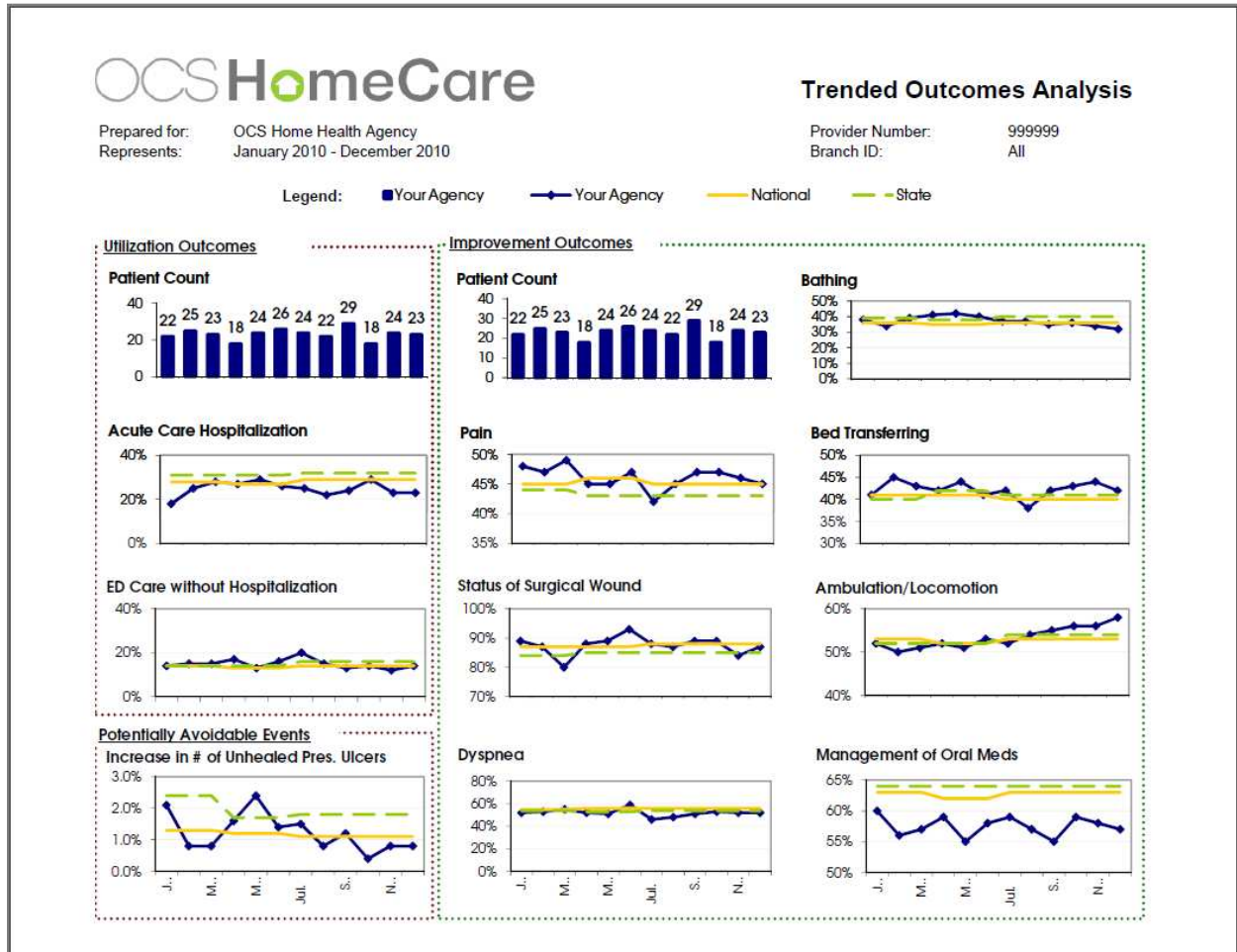
The Monthly Trended Outcomes Analysis provides home health organizations with the ability to monitor key measures and their trends, identify success and areas for remediation, and to ensure performance goals are met.

Quick View of Report Specifications

Report Attribute	Specification
Patient Universe	Depends on the measure. See measure descriptions for more information.
Payers	No limitations; all payers for patients included in patient universe.
Time period	Monthly report.
OASIS Version & Time Points	OASIS-C; Time points depend on the measure. See measure descriptions for more information.
Data Source	OASIS instrument
Minimum Data Requirement	OASIS-C instrument must be completed
Agency Uses	Strategic
Report Frequency	New data for the most recent month will be made available around the 2 nd of the following month
Report Location	Connection / OnDemand tab / Clinical Outcomes folio / Monthly Outcomes tab
Comparative Groups	National and State norms
Risk Adjustment	Data is not risk adjusted; CMS has not yet released risk adjustment methodology for OASIS-C measures. CMS will wait until OASIS-C has been collected nationally for one year to ensure the new risk adjustment model are created on representative historical data. OASIS-B risk adjustment is no longer valid and should not be relied upon as an accurate representation of outcomes performance for OASIS-C measures.

Sample Report

Page 1





Trended Outcomes Analysis (continued)

Prepared for: OCS Home Health Agency
 Represents: January 2010 - December 2010

Provider Number: 999999
 Branch ID: All

Patient Count - Your Agency

	Jan.	Feb.	Mar.	Apr.	May	Jun.	Jul.	Aug.	Sept.	Oct.	Nov.	Dec.
Utilization Outcomes	22	25	23	18	24	26	24	22	29	18	24	23
Improvement Outcomes	18	19	18	15	21	21	19	16	26	15	20	18

Legend Num = Numerator Den = Denominator O.R. = Observed Rate

Acute Care Hospitalization (M2410)

	Jan.	Feb.	Mar.	Apr.	May	Jun.	Jul.	Aug.	Sept.	Oct.	Nov.	Dec.
Your Agency	Num.	4	6	5	7	7	6	5	7	5	6	5
	Den.	22	25	23	18	24	26	24	22	29	18	23
	Rate	18%	25%	28%	27%	29%	26%	25%	22%	24%	29%	23%
National	28%	28%	26%	27%	27%	27%	29%	29%	29%	29%	29%	29%
State	31%	31%	31%	31%	31%	31%	32%	32%	32%	32%	32%	32%

Emergent Department Care without Hospitalization (M2300)

	Jan.	Feb.	Mar.	Apr.	May	Jun.	Jul.	Aug.	Sept.	Oct.	Nov.	Dec.
Your Agency	Num.	3	4	3	3	4	5	3	4	3	3	3
	Den.	22	25	23	18	24	26	24	22	29	18	23
	Rate	14%	15%	15%	17%	13%	16%	20%	15%	13%	14%	12%
National	14%	14%	14%	13%	13%	13%	14%	14%	14%	14%	14%	14%
State	14%	14%	14%	14%	14%	14%	16%	16%	16%	16%	16%	16%

Improvement in Pain (M1242)

	Jan.	Feb.	Mar.	Apr.	May	Jun.	Jul.	Aug.	Sept.	Oct.	Nov.	Dec.
Your Agency	Num.	8	8	7	7	8	8	6	10	6	8	8
	Den.	16	16	14	15	18	17	14	22	13	17	18
	Rate	48%	47%	49%	45%	45%	47%	42%	45%	47%	47%	46%
National	45%	45%	45%	46%	46%	46%	45%	45%	45%	45%	45%	45%
State	44%	44%	44%	43%	43%	43%	43%	43%	43%	43%	43%	43%

Improvement in Status of Surgical Wound (M1342)

	Jan.	Feb.	Mar.	Apr.	May	Jun.	Jul.	Aug.	Sept.	Oct.	Nov.	Dec.
Your Agency	Num.	5	4	6	7	10	7	11	10	6	10	11
	Den.	6	5	8	8	11	8	13	11	18	7	13
	Rate	89%	87%	80%	88%	89%	93%	88%	87%	89%	89%	84%
National	87%	87%	87%	87%	87%	87%	88%	88%	88%	88%	88%	88%
State	84%	84%	84%	85%	85%	85%	85%	85%	85%	85%	85%	85%

Improvement in Dyspnea (M1400)

	Jan.	Feb.	Mar.	Apr.	May	Jun.	Jul.	Aug.	Sept.	Oct.	Nov.	Dec.
Your Agency	Num.	7	7	8	6	8	5	3	4	8	4	8
	Den.	13	13	14	11	16	9	7	8	16	8	16
	Rate	52%	53%	55%	52%	51%	59%	46%	48%	51%	53%	52%
National	55%	55%	55%	56%	56%	56%	56%	56%	56%	56%	56%	56%
State	54%	54%	54%	53%	53%	53%	54%	54%	54%	54%	54%	54%



Trended Outcomes Analysis (continued)

Prepared for: OCS Home Health Agency
 Represents: January 2010 - December 2010

Provider Number: 999999
 Branch ID: All

Improvement in Bathing (M1830)

		Jan.	Feb.	Mar.	Apr.	May	Jun.	Jul.	Aug.	Sept.	Oct.	Nov.	Dec.
Your Agency	Num.	5	5	4	5	7	6	6	4	5	4	5	4
	Den.	14	14	11	13	16	14	15	11	13	11	15	14
	Rate	36%	34%	39%	41%	42%	40%	37%	37%	35%	36%	34%	32%
National		36%	36%	36%	35%	35%	35%	36%	36%	36%	36%	36%	36%
State		39%	39%	39%	38%	38%	38%	40%	40%	40%	40%	40%	40%

Improvement in Bed Transferring (M1850)

		Jan.	Feb.	Mar.	Apr.	May	Jun.	Jul.	Aug.	Sept.	Oct.	Nov.	Dec.
Your Agency	Num.	7	7	7	5	7	6	6	5	6	5	7	6
	Den.	17	16	16	13	16	15	15	12	14	11	16	14
	Rate	41%	45%	43%	42%	44%	41%	42%	38%	42%	43%	44%	42%
National		41%	41%	41%	41%	41%	41%	40%	40%	40%	40%	40%	40%
State		40%	40%	40%	42%	42%	42%	41%	41%	41%	41%	41%	41%

Improvement in Ambulation/Locomotion (M1860)

		Jan.	Feb.	Mar.	Apr.	May	Jun.	Jul.	Aug.	Sept.	Oct.	Nov.	Dec.
Your Agency	Num.	9	8	8	7	8	8	8	6	8	6	9	8
	Den.	17	16	16	13	16	15	15	12	14	11	16	14
	Rate	52%	50%	51%	52%	51%	53%	52%	54%	55%	56%	56%	58%
National		53%	53%	53%	52%	52%	52%	53%	53%	53%	53%	53%	53%
State		52%	52%	52%	52%	52%	52%	54%	54%	54%	54%	54%	54%

Improvement in Management of Oral Meds (M2020)

		Jan.	Feb.	Mar.	Apr.	May	Jun.	Jul.	Aug.	Sept.	Oct.	Nov.	Dec.
Your Agency	Num.	7	7	5	5	8	6	5	5	7	4	6	5
	Den.	11	12	9	8	14	11	8	9	12	7	10	9
	Rate	60%	56%	57%	59%	55%	58%	59%	57%	55%	59%	58%	57%
National		63%	63%	63%	62%	62%	62%	63%	63%	63%	63%	63%	63%
State		64%	64%	64%	64%	64%	64%	64%	64%	64%	64%	64%	64%

Increase in Number of Unhealed Pressure Ulcers (M1308)

		Jan.	Feb.	Mar.	Apr.	May	Jun.	Jul.	Aug.	Sept.	Oct.	Nov.	Dec.
Your Agency	Num.	1	0	0	0	1	0	0	0	1	0	0	0
	Den.	18	19	18	15	21	21	19	16	26	15	20	18
	Rate	2.1%	0.0%	0.0%	0.0%	2.4%	0.0%	0.0%	0.0%	1.2%	0.0%	0.0%	0.0%
National		1.3%	1.3%	1.3%	1.2%	1.2%	1.2%	1.1%	1.1%	1.1%	1.1%	1.1%	1.1%
State		2.4%	2.4%	2.4%	1.7%	1.7%	1.7%	1.8%	1.8%	1.8%	1.8%	1.8%	1.8%

Report Structure

Header Definitions

Element	Definition
Prepared for:	Agency Name
Provider Number:	Agency ID (M0010)
Branch ID:	Branch ID (M0016)
Represents:	Assessments completed between the start and end months

Compare Group Definitions

Element	Definition
Month (January – December)	Counts/Averages for the month
Your Agency	Counts/Averages for your agency
State Norm	Counts/Averages for agencies in your state. State data will be blank if less than 5 agencies submitted data within your state.
National Norm	Counts/Averages for all US agencies

Graphical Data

The information provided on page 1 of this report displays a graphical representation of the cumulative scores for your organization, your state, and the nation for a selection of measures. These measures are also displayed in tabular format along with monthly scores for your agency on subsequent pages in this report. For definitions of the measures displayed graphically, please refer to the measure description of the same name in the Measure Definitions section below.

Tabular Data

The information provided on pages 2 and 3 of this report displays the rate of your organization, along with state and national rates. Additionally the **numerator** and **denominators** are provided for your organization.

Measure Definitions

Patient Count – Your Agency

Element	Numerator
Patient Count (Utilization)	Count of “end of care” assessments (EOC); i.e. Total number of Transfer Discharge, Transfer Not Discharge and Discharge assessments (RFA = 6, 7, or 9)
Patient Count (Improvement)	Count of patients for whom an OASIS-C start assessment (SOC/ROC) was completed on or after 1/1/2010 and a discharge assessment was completed during the column header time frame.

Outcomes Measures

The outcome measures in this report require that a patient's "episode of care" started after OASIS-C was implemented (1/1/2010). Patients whose SOC or most recent ROC happened prior to 1/1/2010 are not included. Therefore, record counts for January, February, and March (and potentially subsequent months) will be much lower than the actual patients served during these months.

Consequently, these outcomes may not be reflective of true performance, because the patient population included in the calculation is disproportionately representative of shorter cases of care. The impact of this will vary by agency; agencies with lower lengths of stay will have less of an impact and the numbers will be reflective of "true" performance sooner while agencies with longer lengths of stay will have more of an impact. As the year goes on, the results will be more accurate and representative of actual outcomes as more patients will have had a SOC/ROC captured in OASIS-C.

Be careful about trending results from OASIS-C measures against results from OASIS-B measures of the same name from 2009. In addition to the implications on the volume of patients described above, many of the questions underlying the calculations have changed slightly, which will impact the actual outcomes, in varying degrees of magnitude. Therefore, it is not "apples-to-apples" to trend these measures against 2009 data.

Element	Numerator	Denominator
Acute Care Hospitalization (M2410)	Count of EOC assessments where M2410=1 and M2430<>19)	Count of EOC assessments
Emergency Department Care without Hospitalization (M2300)	Count of EOC assessments where M2300 = 1	Count of EOC assessments
Increase in Number of Unhealed Pressure Ulcers (M1308)	Count of patients whose number of stage II pressure ulcers increased between the SOC/ROC and EOC	Count of patients for which the number of pressure ulcers can be determined SOC/ROC and EOC
Improvement in Pain Interfering with Activity (M1242)*	Count of patients that improved in pain	Count of patients that could improve in pain; excludes patients that were already at the highest level of function
Improvement in Status of Surgical Wound (M1342)	Count of patients that improved in the status of the most problematic surgical wound	Count of patients that had an observable surgical wound at SOC/ROC
Improvement in Dyspnea (M1400)	Count of patients that improved in Dyspnea	Count of patients that could improve in Dyspnea; excludes patients that were already at the highest level of function
Improvement in Bathing (M1830)*	Count of patients that improved in bathing	Count of patients that could improve in bathing; excludes patients that were already at the highest level of function
Improvement in Bed Transferring (M1850)*	Count of patients that improved in bed transferring	Count of patients that could improve in bed transferring; excludes patients that were already at the highest level of function

Element	Numerator	Denominator
Improvement in Ambulation/Locomotion*	Count of patients that improved in ambulation/locomotion	Count of patients that could improve in ambulation/locomotion; excludes patients that were already at the highest level of function
Improvement in Management of Oral Meds*	Count of patients that improved in management of oral meds	Count of patients that could improve in management of oral meds; excludes patients that were not on meds or were already at the highest level of function

* Measure excludes patients where the response for M1710 (Confusion) or M1720 (Anxiety) was “NA – Patient nonresponsive” for the most recent SOC/ROC

Other Resources

For more information or guidance in using this report, contact OCS Client Services at 866.641.8324, or refer to the information available in the e-Learning Network at www.ocshomecare.com. There you will find links to white papers, client success stories, and recorded training sessions.