

Report Interpretation Guide
PPS Monitor
New Episode Tracking



Table of Contents

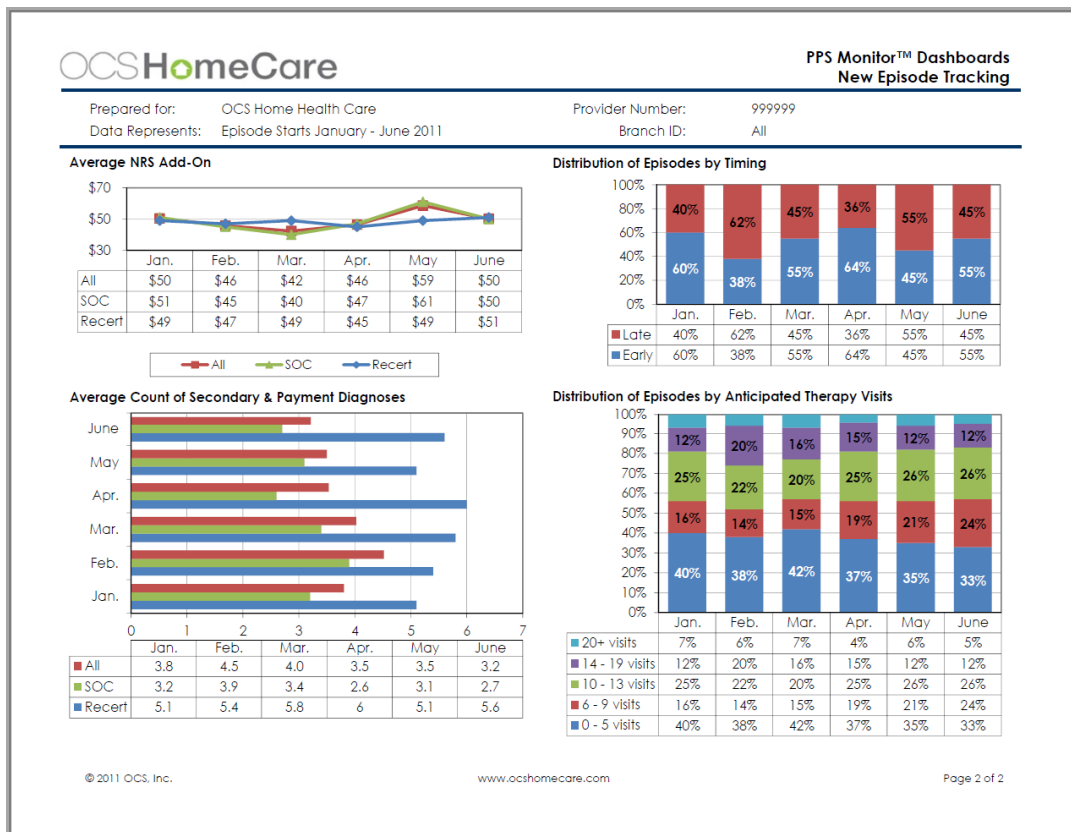
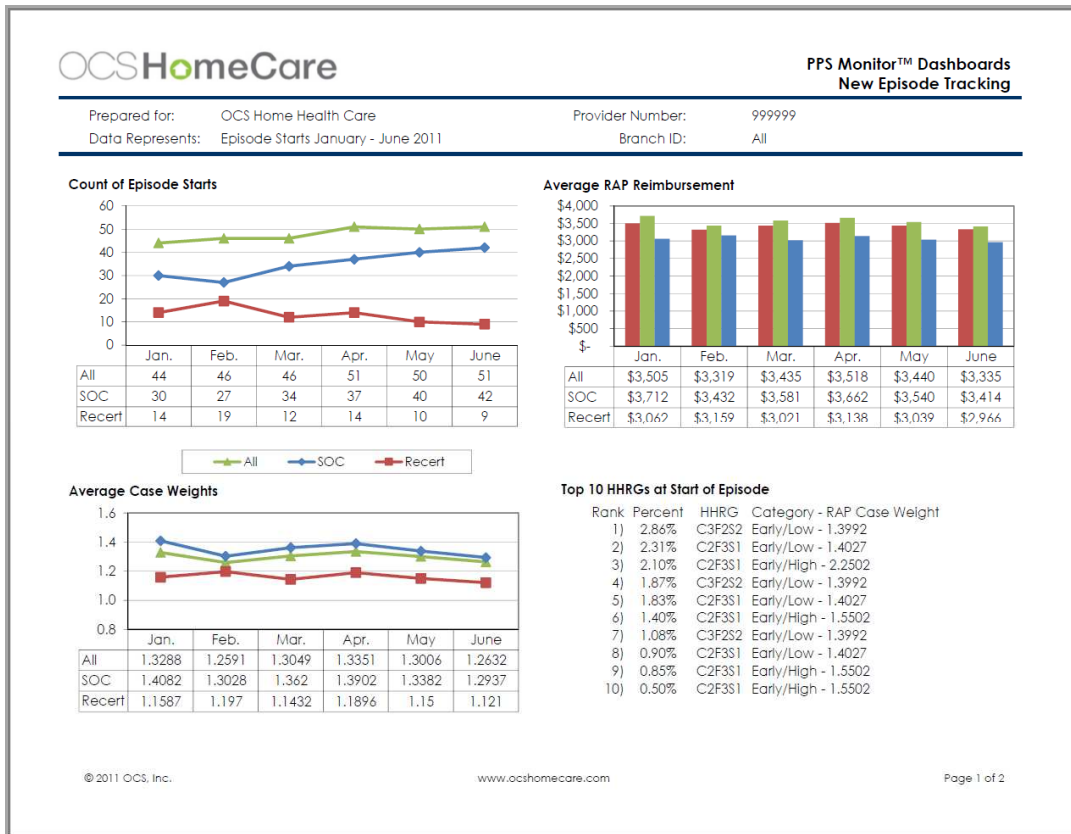
Introduction	3
Quick View of Report Specifications	3
Report Structure	5
Header Definitions	5
Measure Definitions	5
Other Resources	7

Introduction

The PPS Monitor for New Episode Tracking provides information about the start of new PPS episodes. This report is useful for tracking critical PPS indicators and how they change over time, offering insight into potential changes in the way that OASIS data is collected or in the patient population and informing decisions. The trended data from the start of PPS episodes also helps you understand changes in patient severity that lead to changes in reimbursement and resource requirements, allowing you to adapt quickly and make changes in cash management and staffing, as appropriate.

Quick View of Report Specifications

Report Attribute	Specification
Patient Universe	All patients
Payers	All payers, although we recommend filtering by traditional Medicare for a picture of true “PPS” data
Time period	Represents episodes started during the time frame selected by the user and noted on the report
Data Sources	Start of episode OASIS data (Start of Care and Recertification assessments)
Report Frequency	As often as desired by the user; reports automatically included six months of trended data, data is available for a given month after its completion
Report Location	Connection On Demand tab Strategic Reports PPS Outcomes folio PPS Monitor – New Episodes
Comparative Groups	None – this report includes agency data only
Risk Adjustment	Risk adjustment does not apply



Report Structure

Header Definitions

Element	Definition
Prepared for:	Agency name
Provider Number:	The Home Health Agency (HHA) CMS Certification Number (CCN) or OASIS M0010.
Data represents:	The time frame selected for the report. Episodes included in the analysis ended during that window.
Branch ID:	The HHA branch ID, OASIS M0016. Only included on branch-level reports.

Measure Definitions

Graph: Count of Episode Starts

Item	Numerator	Denominator
All	Count of all of the most commonly used “start of episode” assessments (SOE) – start of care and recertification	NA
SOC	Count of start of care - RFA 1 (SOC) assessments	NA
Recert	Count of all recertification - RFA 4 (Recert) assessments	NA

Graph: Average RAP Reimbursement

Item	Numerator	Denominator
All	Sum of anticipated reimbursement for all SOC and Recert assessments, calculated by applying the assessment’s case weight to the CMS reimbursement methodology, including applying wage adjustment based on the patient’s location and adding in the non-routine supply add-on component	Count of “start of episode” (SOE) assessments (SOC and Recert)
SOC	Sum of anticipated reimbursement for all SOC assessments	Count of SOC assessments
Recert	Sum of anticipated reimbursement for all Recert assessments	Count of Recert assessments

Graph: Average Case Weights

Item	Numerator	Denominator
All	Sum of case weights for all SOE assessments (SOC and Recert), as calculated using the CMS PPS methodology using the OASIS data	Count of SOE assessments (SOC and Recert)
SOC	Sum of case weights for all SOC assessments	Count of SOC assessments
Recert	Sum of case weights for all Recert assessments	Count of Recert assessments

Table: Top Ten HHRGs at Start of Episode

Item	Numerator	Denominator
Rank	NA – Rank shows how common the HHRG/case weight is relative to other HHRGs/case weights for your agency. The 10 most common are included.	NA
Percent of all HHRGs	Count of SOE assessments (SOC and Recert) with the HHRG/case weight	Count of SOE assessments (SOC and Recert)
HHRG	The HHRG (C-score, F-score, S-score), calculated from the OASIS data	NA
Category	The timing (early or late) and level of therapy (low/less than 14 or high/14 or higher)	NA
Case Weight	The case weight associated with the HHRG and category	NA

Graph: NRS Add-On

Item	Numerator	Denominator
All	Sum of NRS add-on reimbursement, as determined by the NRS severity weight, for all SOC and Recert assessments	Count of SOE assessments (SOC and Recert)
SOC	Sum of NRS add-on reimbursement for all SOC assessments	Count of SOC assessments
Recert	Sum of NRS add-on reimbursement for all Recert assessments	Count of Recert assessments

Graph: Distribution of Episodes by Timing

Item	Numerator	Denominator
Late	Count of SOE assessments (SOC and Recert) – identified as “later” (M0110)	Count of SOE assessments (SOC and Recert)
Early	Count of SOE assessments (SOC and Recert)– identified as “early” (M0110)	Count of SOE assessments (SOC and Recert)

Graph: Average Count of Secondary and Payment Diagnoses

Item	Numerator	Denominator
All	Sum of the count of secondary (M1022) and payment (M1024) diagnoses used in all SOE assessments (SOC and Recert)	Count of SOE assessments (SOC and Recert)
SOC	Sum of the count of secondary (M1022) and payment (M1024) diagnoses used in SOC assessments	Count of SOC assessments
Recert	Sum of the count of secondary (M1022) and payment (M1024) diagnoses used in Recert assessments	Count of Recert assessments

Graph: Distribution of Episodes by Anticipated Therapy Visits

Item	Numerator	Denominator
20+ visits	Count of SOE assessments (SOC and Recert) – with an indication that 20 or more therapy visits will be provided during the episode (M2200)	Count of SOE assessments (SOC and Recert)
14-19	Count of SOE assessments (SOC and Recert) with an indication that between 14 and 19 therapy visits will be provided (M2200)	Count of SOE assessments (SOC and Recert)
10-13	Count of SOE assessments (SOC and Recert) with an indication that between 10 and 13 therapy visits will be provided (M2200)	Count of SOE assessments (SOC and Recert)
6-9	Count of SOE assessments (SOC and Recert) with an indication that between 6 and 9 therapy visits will be provided (M2200)	Count of SOE assessments (SOC and Recert)
0-5	Count of SOE assessments (SOC and Recert) with an indication that 5 or fewer therapy visits will be provided during the episode (M2200)	Count of SOE assessments (SOC and Recert)

Other Resources

For more information or guidance, please contact OCS HomeCare Client Support at 866.641.8324 or refer to the information available on the e-Learning Network, located on the Support tab in Connection.